

MONTHLY MEMBERSHIP PROGRESS REPORT

District 13 OH5

Results as of: 10/31/2023

GMT:

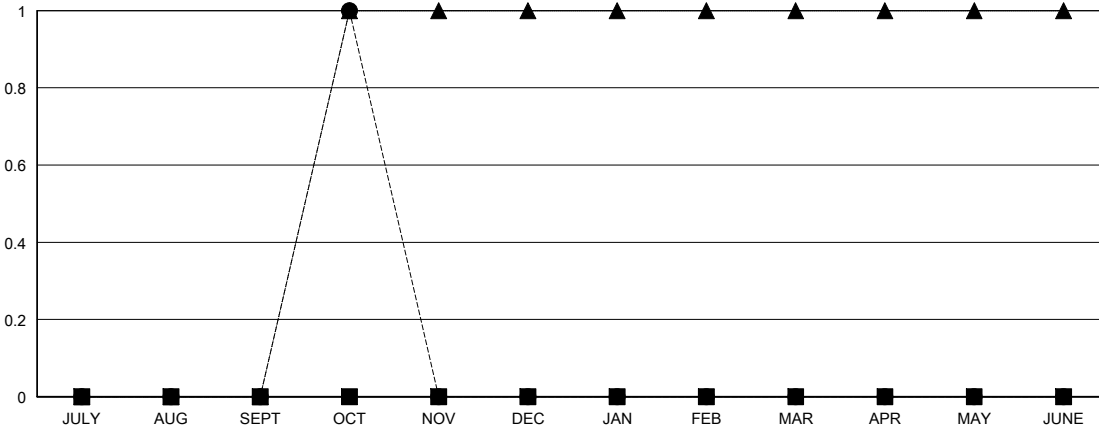
LOCATION OHIO

GMT CA

Clubs			
RESULTS FOR 2023-2024			
QUARTER	NEW CLUB GOAL	NEW CLUBS	DROPPED CLUBS
JULY/AUG/SEPT	0	0	1
OCT/NOV/DEC	0	1	0
JAN/FEB/MAR	0	0	0
APR/MAY/JUNE	0	0	0

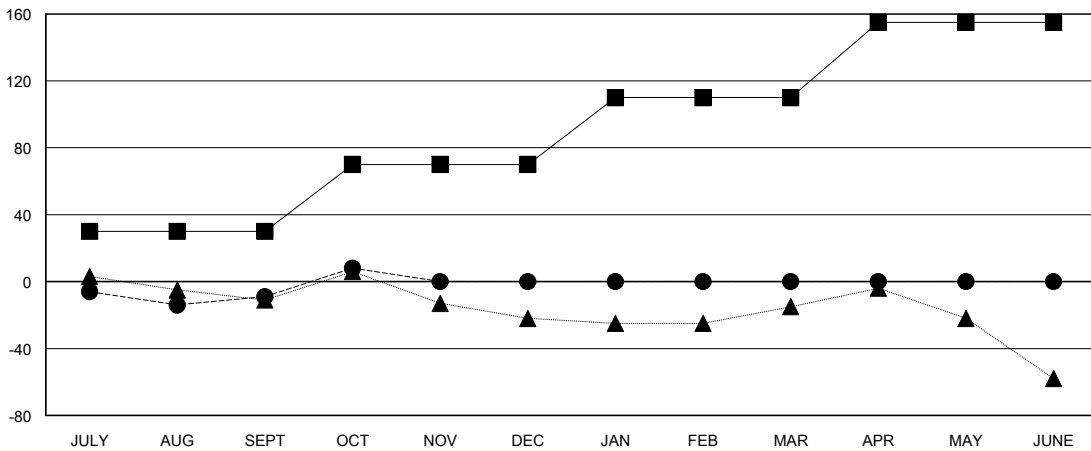
Members			
RESULTS FOR 2023-2024			
QUARTER	MEMBER GROWTH NET GOAL	MEMBER GROWTH ACTUAL	DROPPED MEMBERS ACTUAL (including transfers)
JULY/AUG/SEPT	30	29	32
OCT/NOV/DEC	40	48	31
JAN/FEB/MAR	40	0	0
APR/MAY/JUNE	45	0	0

GOALS AND ACTUAL NEW CLUBS CUMULATIVE



- - CURRENT YEAR GOALS FOR NEW CLUBS
- - CURRENT YEAR ACTUAL NEW CLUBS
- ▲ - LAST YEAR ACTUAL NEW CLUBS

GOALS AND ACTUAL MEMBERS CUMULATIVE



- - MEMBER GROWTH NET GOAL
- - MEMBER GROWTH ACTUAL
- ▲ - LAST YEAR MEMBERSHIP ACTUAL

DROPPED CLUBS: 1	25 CLUBS OF 52 ADDED 1 OR MORE NEW MEMBERS	GENDER DISTRIBUTION
		MALE 909 (70.68%)
		FEMALE 377 (29.32%)
DROPPED MEMBERS	CLICK HERE FOR CUMULATIVE MEMBERSHIP DATA	TOTAL FAMILY UNIT MEMBERS 209
DECEASED 8		FAMILY MEMBERS PAYING HALF DUES 106
CLUB CANCELLED 0		
OTHER 55		
TOTAL 63		